



# BACKPACK VIBRATOR

## INSTRUCTION MANUAL

SAFETY, ASSEMBLY, AND MAINTENANCE INSTRUCTIONS FOR MODELS:

---

**Model: Pro 50-4S**

---



**NORTHROCK INDUSTRIES  
3688 HORSEBLOCK ROAD  
MEDFORD, NY 11763**

**TEL: 1-800-989-8423  
1-631-924-6130  
FAX: 1-800-315-1277  
1-631-924-6369**

## WARNING

When using concrete vibrators as with any gasoline powered tool, basic safety precautions should always be followed to reduce the risk of fire and personal injury. Read all the safety, operating, and maintenance instructions provided in the Honda engine owners manual along with the assembly instructions below before attempting to start the backpack engine.

### Assembly Instructions

Your purchase of a Northrock Pro50-4S concrete vibrator shows your appreciation for the highest quality construction equipment available. To maximize this tool's life please follow these simple assembly and maintenance instructions listed.

- 1) Secure the throttle bracket to the frame using the two screws, lock washers, and nuts provided. The throttle cable is shipped attached from the factory.
- 2) All Pro50-4S backpacks come standard with quick disconnect. Assemble the quick disconnect adapter to the flexible shaft by inserting the male flexible core end into the female adapter on the quick disconnect adapter, and then threading the adapter on to the flexible shaft casing using a pipe wrench to secure it.
- 3) Next assemble the flexible shaft to the vibrator head in the same manner as the quick disconnect adapter, except on this end apply an adhesive sealant to the threads before assembly to form a water tight seal.
- 4) Adjust the shoulder straps on the power unit for the most comfortable fit.
- 5) Attach the flexible shaft to the power unit by lining up the square drive and then lifting the spring pin to insert the adapter. Once the adapter is inserted spin the shaft until you see that the pin has inserted. When the pin is inserted properly the flexible shaft should not be able to spin.
- 6) The vibrator is now ready to be oiled and fueled. Please refer to the Honda owners manual for proper start up procedure.

### Maintenance Instructions

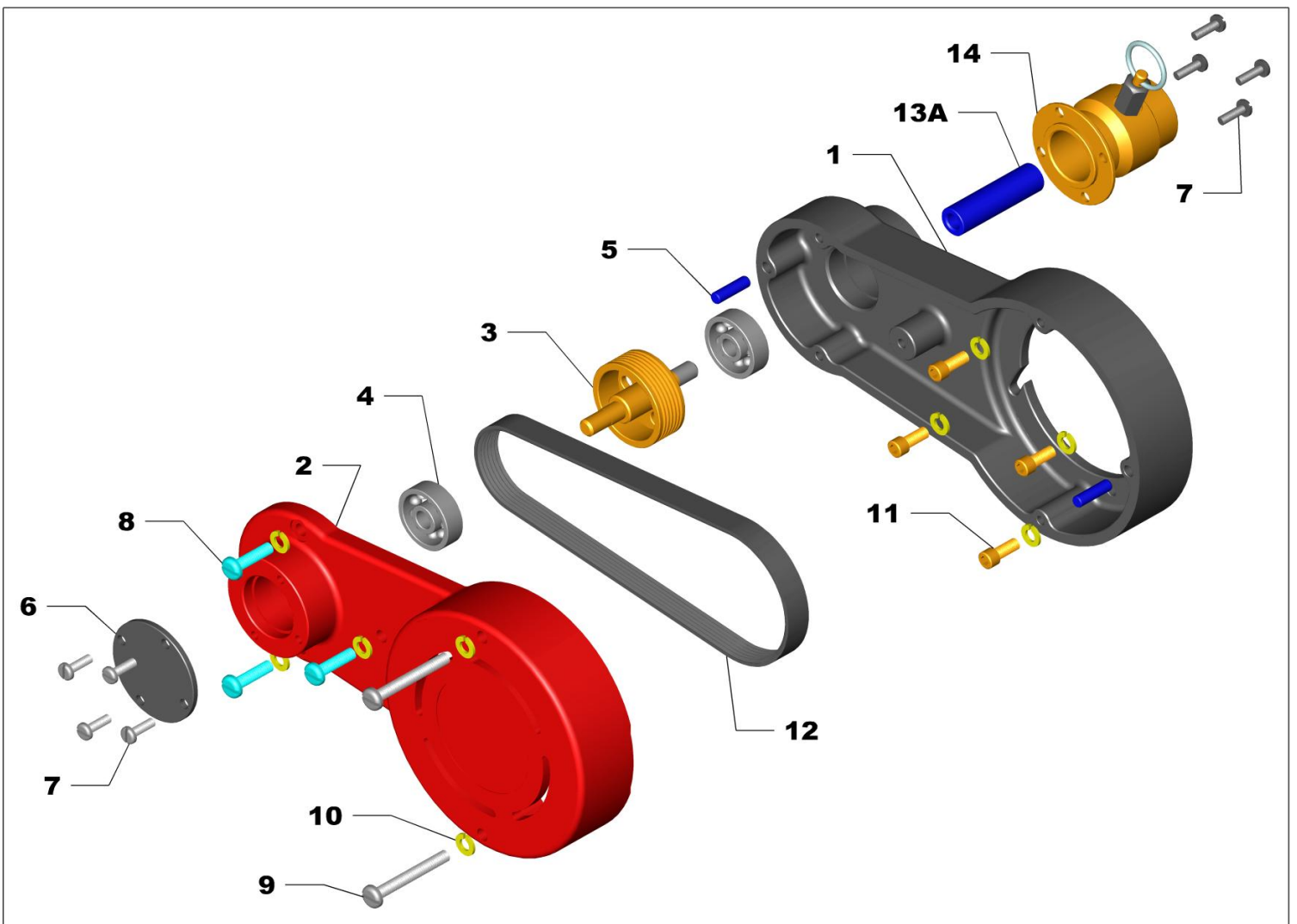
Engine: Refer to the Honda owners manual attached.

Shafts: Lubricate the flexible shaft approximately every fifty hours of operation by removing the inner core, wiping it with a clean cloth, and reinstalling it with 1/16" coating of high quality lithium grease.

Heads: Heads are factory sealed and require no maintenance.

# TRANSMISSION

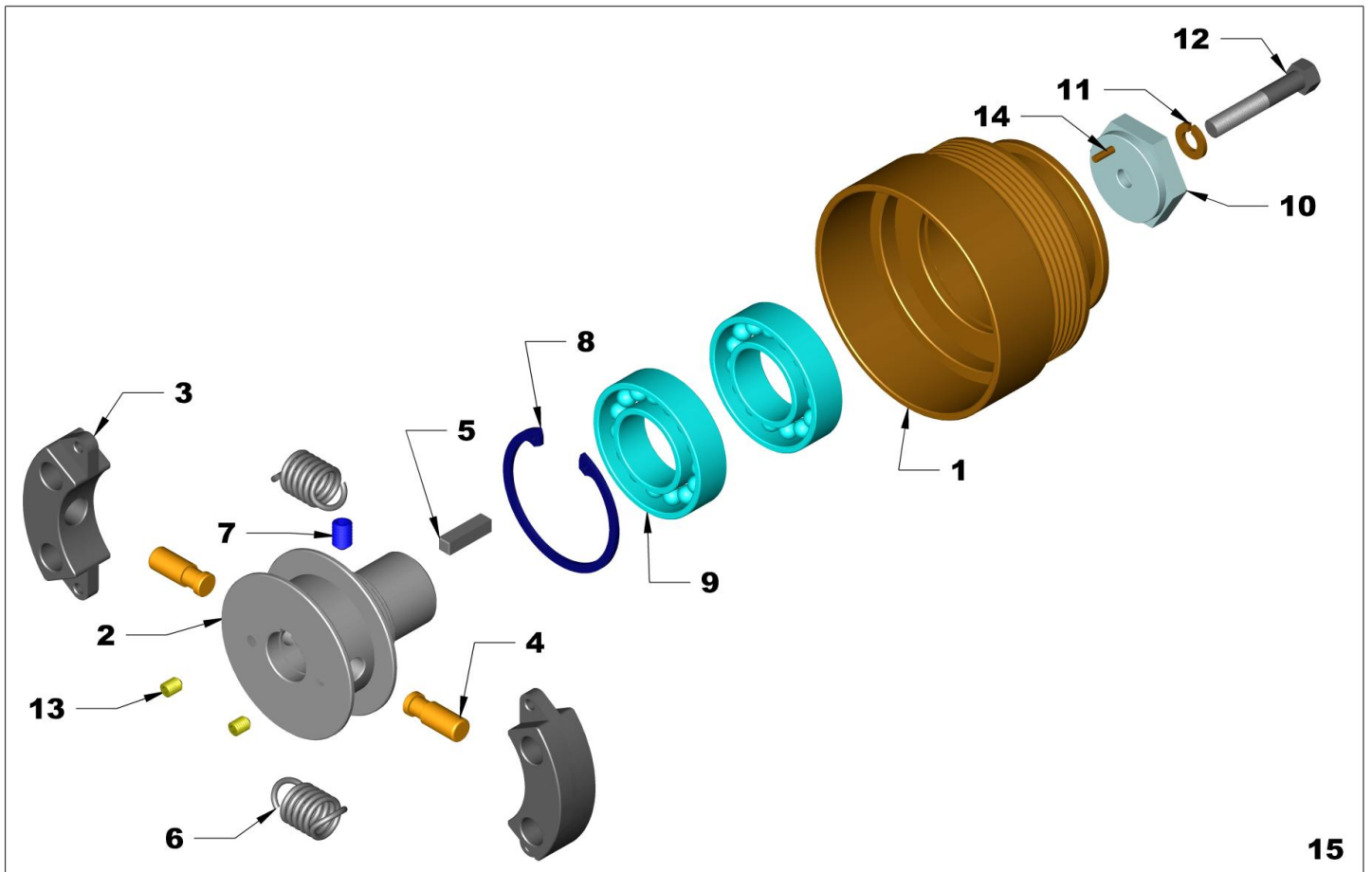
| Ref. | Part No.           | DESCRIPTION             | QTY |
|------|--------------------|-------------------------|-----|
| 1    | 635A1              | TRANSMISSION BOX        | 1   |
| 2    | 635B1              | TRANSMISSION BOX COVER  | 1   |
| 3    | 295N1              | DRIVEN PULLEY           | 1   |
| 4    | 140C300            | BEARING, DOUBLE SEALED  | 2   |
| 5    | 180G87             | DOWEL PIN               | 2   |
| 6    | 215M1              | END CAP                 | 1   |
| 7    | 190F150            | SCREW                   | 8   |
| 8    | 190F208            | SCREW                   | 3   |
| 9    | 190F220            | SCREW                   | 2   |
| 10   | 285A250            | LOCK WASHER             | 9   |
| 11   | 320B206            | SOCKET CAP SCREW        | 4   |
| 12   | 390B1              | MICRO V BELT            | 1   |
| 13A  | 160CW1             | L.H. DRIVE CORE ADAPTER | 1   |
| 13B  | 160CW2 (not shown) | R.H. DRIVE CORE ADAPTER | 1   |
| 14   | 150DE1             | CASING ADAPTER          | 1   |



NOTE: OTHER STYLES AVAILABLE UPON REQUEST.

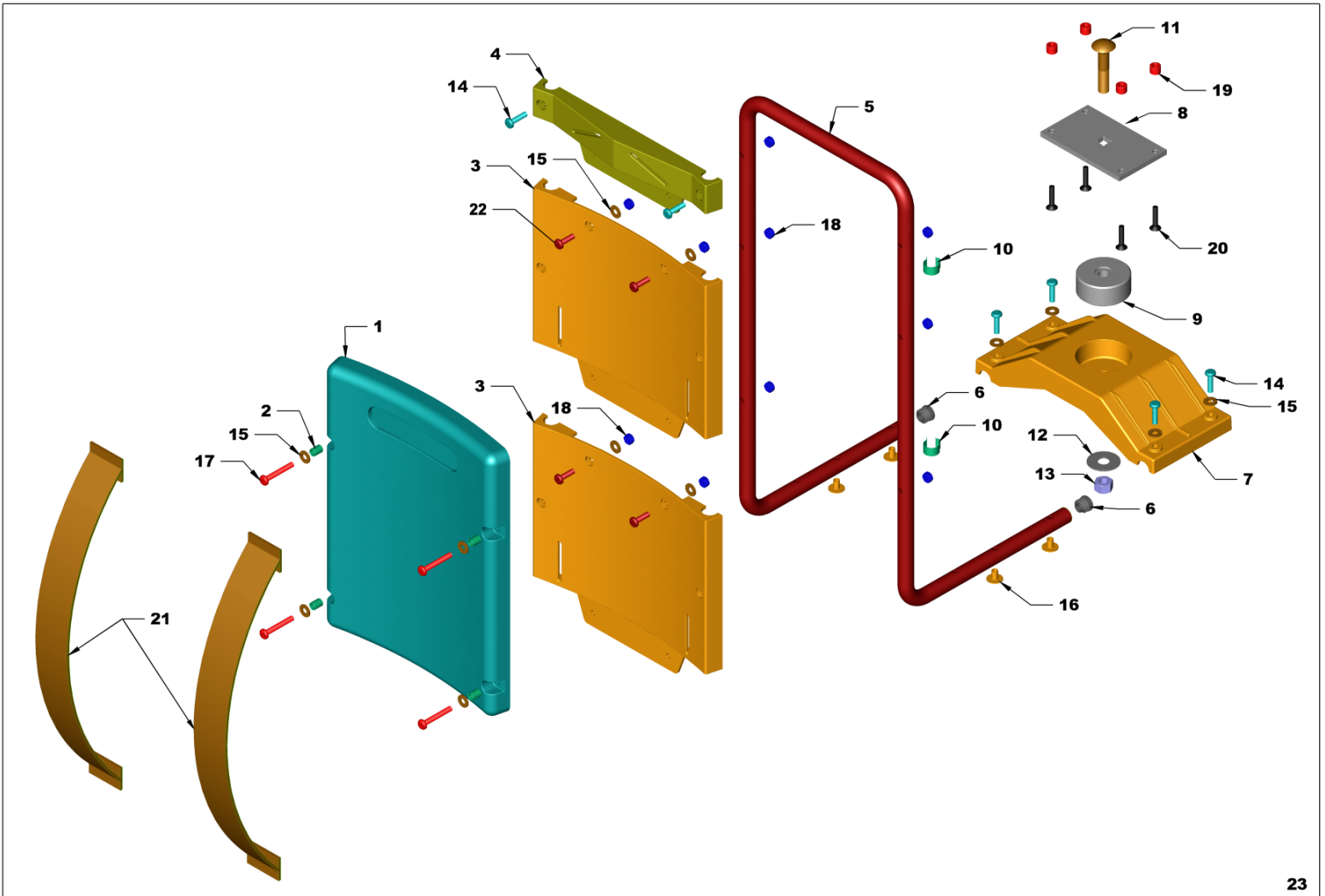
# CLUTCH ASSEMBLY

| Ref. | Part No. | DESCRIPTION              | QTY |
|------|----------|--------------------------|-----|
| 1    | 295P1    | PULLEY, CLUTCH DRUM      | 1   |
| 2    | 630A1    | CLUTCH ADAPTER           | 1   |
| 3    | 625A1    | CLUTCH SHOE              | 2   |
| 4    | 180F308  | DOWEL PIN                | 2   |
| 5    | 575D75   | KEY                      | 1   |
| 6    | 465D1    | CLUTCH SPRING            | 2   |
| 7    | 320A203  | SET SCREW                | 1   |
| 8    | 255F1    | RETAINING RING           | 1   |
| 9    | 140D005  | BEARING, DOUBLE SHIELDED | 2   |
| 10   | 370D1    | WASHER                   | 1   |
| 11   | 285A250  | LOCK WASHER              | 1   |
| 12   | 280B150  | SCREW                    | 1   |
| 13   | 190B125  | SET SCREW                | 2   |
| 14   | 180A1    | SPRING PIN               | 1   |
| 15   | 25BA1    | COMPLETE CLUTCH ASSEMBLY | 1   |



# FRAME

| Ref. | Part No. | Description             | Qty. |
|------|----------|-------------------------|------|
| 1    | 445B1    | PAD                     | 1    |
| 2    | 200AP1   | BOLT LINER              | 4    |
| 3    | 215BW1   | PANEL                   | 2    |
| 4    | 215BY1   | TOP PANEL               | 1    |
| 5    | 440S1    | FRAME                   | 1    |
| 6    | 400D1    | END CAPS                | 2    |
| 7    | 215CA1   | ENGINE MOUNT            | 1    |
| 8    | 215BR1   | ENGINE MOUNTING PLATE   | 1    |
| 9    | 200AH1   | SPACER, ENGINE          | 1    |
| 10   | 467A1    | THROTTLE CABLE CLIP     | 2    |
| 11   | 190K250  | CARRIAGE BOLT           | 1    |
| 12   | 370E50   | WASHER                  | 1    |
| 13   | 210D50   | NYLOC NUT               | 1    |
| 14   | 190F212  | SCREW                   | 6    |
| 15   | 370A250  | WASHER                  | 12   |
| 16   | 211D25   | WELD NUT                | 4    |
| 17   | 190F217  | SCREW                   | 4    |
| 18   | 211B250  | NYLOC NUT               | 10   |
| 19   | 200AJ1   | STAND-OFFS ENGINE PLATE | 4    |
| 20   | 190J30   | SCREW ENGINE MOUNT      | 4    |
| 21   | 525B1    | SHOULDER STRAPS         | 2    |
| 22   | 190F210  | SCREW                   | 4    |
| 23   | 440V1    | COMPLETE FRAME ASSEMBLY | 1    |



# THROTTLE ASSEMBLY

| Ref. | Part No. | Description                | Qty. |
|------|----------|----------------------------|------|
| 1    | 440T1    | THROTTLE BRACKET           | 1    |
| 2    | 190F217  | SCREW                      | 2    |
| 3    | 285A250  | LOCK WASHER                | 2    |
| 4    | 211D25   | WELD NUT                   | 2    |
| 5    | 190F217  | SCREW                      | 1    |
| 6    | 400D1    | END CAPS                   | 2    |
| 7    | 467A1    | THROTTLE CABLE CLIP        | 1    |
| 8    | 605E1    | THROTTLE CONTROL ASSEMBLY  | 1    |
| 9    | 165H1    | COMPLETE THROTTLE ASSEMBLY | 1    |

